

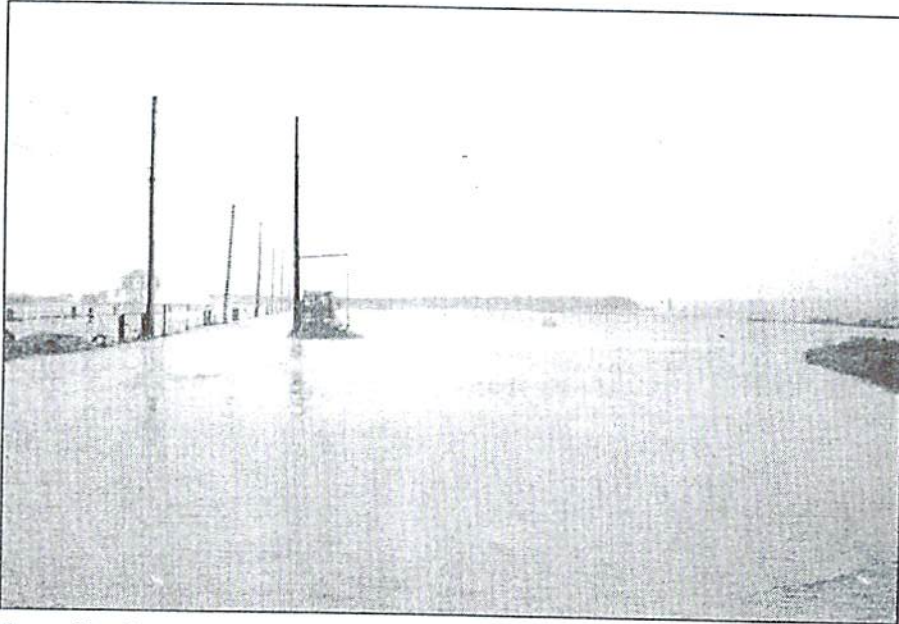
STORMS

Duxbury Clipper

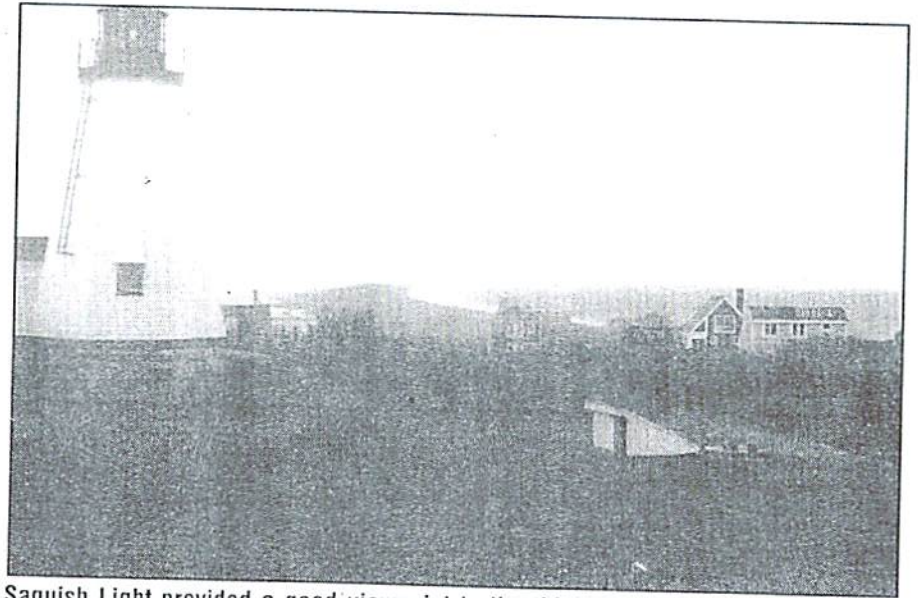
Wednesday, November 13, 2002

13

Lack of Wind Turns Nor'easter Into Simple Flood



The parking lot at Duxbury Beach was under a couple of inches of water Wednesday just before noon, during the highest tide of the year.

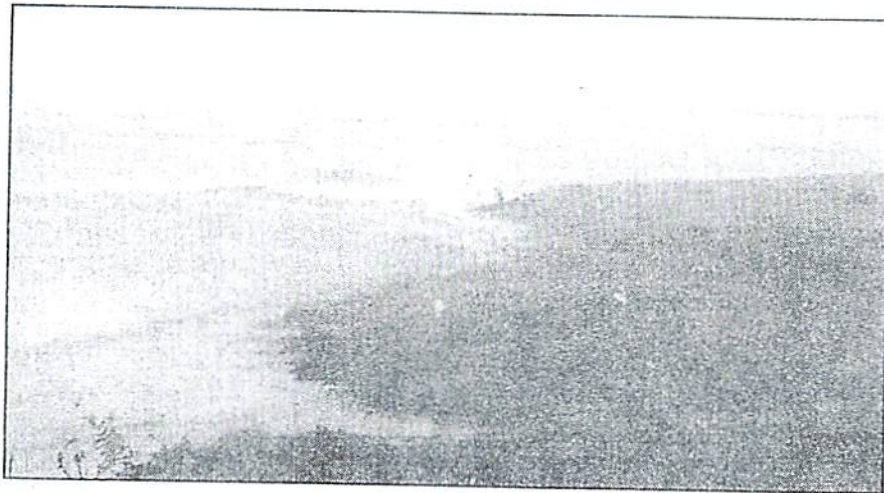


Saquish Light provided a good viewpoint to the tidal vistas. The water was at its highest at noon, but receded within a few hours.

Photos by CLAIRE MASSIMO



The dirt road out to Saquish reached depths of over one foot.



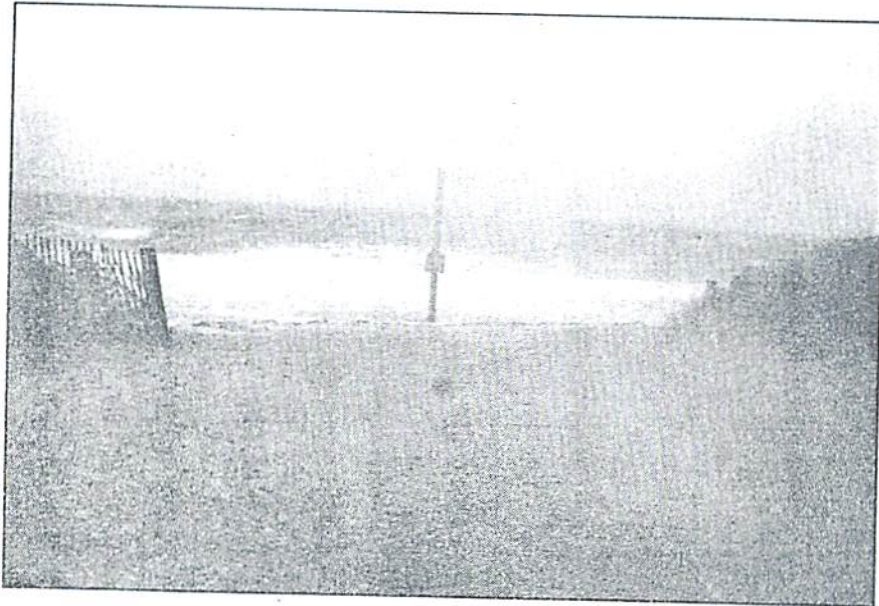
A lone, loony canoer tries to enjoy the storm in his boat. Unfortunately, or more likely fortunately, he wasn't able to launch himself against the forceful waves.



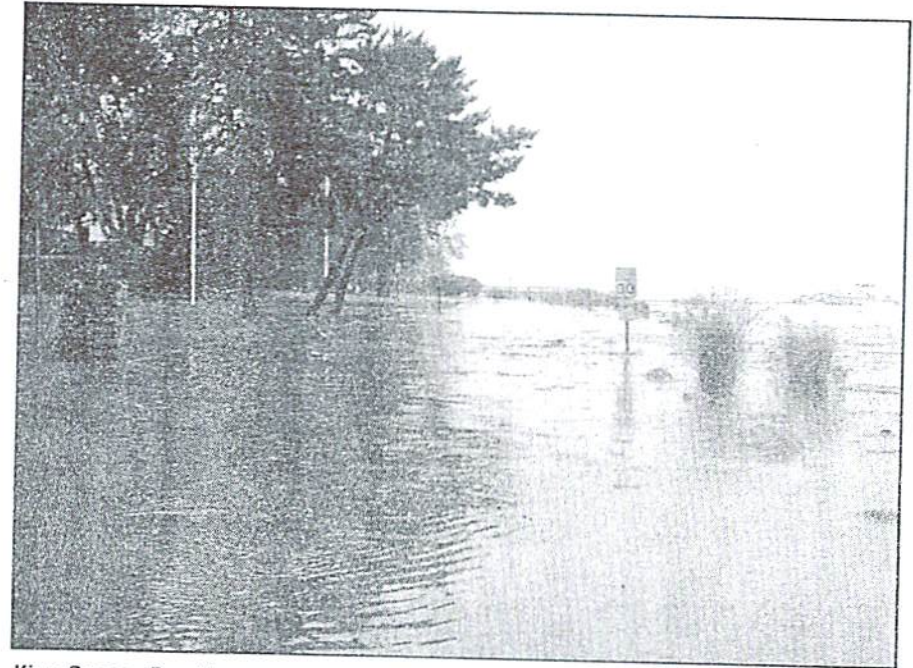
This yard on King Casear Road would bring mud football to new heights, if anyone were willing to try.



The Blue Fish River area was one of the first to flood. DPW workers and police tried to dissuade drivers, but spectators gathered to watch the splash of persistent SUV operators.



The first crossover offers a new view, or lack thereof, as water covers the entire beach.



King Casear Road became a pond for the afternoon hours, but by late afternoon all that was left was some seaweed on a few lawns.